



SmarterMeasure

Charting API

Version 1.0

Contents

- 1. Revision History 3
- 2. Overview 3
- 3. Base URL..... 3
- 4. Chart Types 3
 - 3.1 Overview Bar Chart 3
 - 3.2 Radar Chart 4
 - 3.3 Gauge Chart 5
 - 3.4 Scale Chart 6
 - 3.3 Bullseye Chart 6

1. Revision History

Date	Version	Revised By	Section	Description
7/9/2010	1.0	Jason Fill	All	Initial Version

2. Overview

The SmarterMeasure Charting API enables external systems to embed the SmarterMeasure charts within its content. Sample uses might be to include the charts in dashboards, profile pages, or any other page that will be populated by SmarterMeasure data.

Please note: There is no limit to the number of requests a single IP can request.

3. Base URL

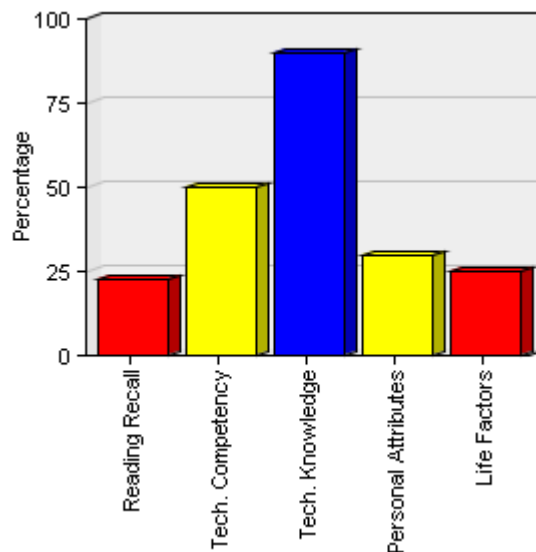
The base URL for all charts is as follows:

<http://charts.smartermeasure.com/charting.render>

4. Chart Types

3.1 Overview Bar Chart

The bar chart that shows an overview for each chartable section of SmarterMeasure.



Base Overview Chart URL: <http://charts.smartermeasure.com/charting.render/ct/obar>

Valid parameters include:

Parameter Name	Description	Data Type	Example
data	The data that is to be charted. If using the GetUserOverview method from the ARS this value will be provided for you.	String	r:23,tc:50,tk:67,pa:30,lf:25
format	The format of the chart. Valid values are flash or png. Default is png.	String	Flash
width	The width of the chart	Numeric	350
height	The height of the chart	Numeric	150
showLegend	Toggles the display of the legend. Default is false.	Boolean	true
3d	If the chart should be displayed in 3d	Boolean	True
xLabelDir	The direction of the x-axis label. This is ether v for vertical or h for horizontal.	String	V
xLabelMulti	If the labels on the x-axis can be multi line.	Boolean	True
showValues	If the actual column values should be displayed over the bar.	Boolean	True

Example Flash:

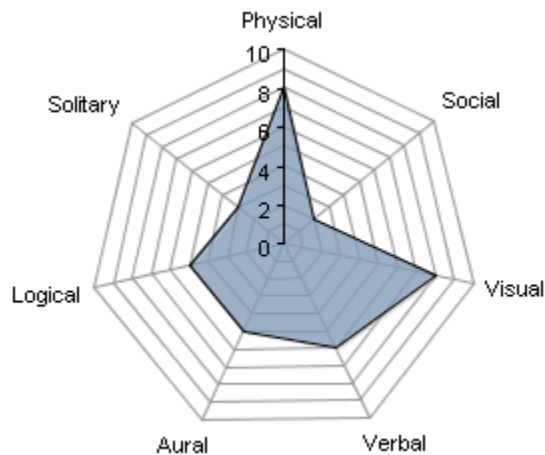
<http://charts.smartermeasure.com/charting.render/ct/obar/data/r:23,tc:50,tk:67,pa:30,lf:25/3d/true/format/flash/xLabelDir/v/showValues/true>

Example PNG:

<http://charts.smartermeasure.com/charting.render/ct/obar/data/r:23,tc:50,tk:67,pa:30,lf:25/width/275/height/300/3d/true/xLabelDir/v/showValues/true>

3.2 Radar Chart

The radar chart is used to display the distribution of learning styles.



Base Radar Chart URL: <http://charts.smartermeasure.com/charting.render/ct/radar>

Valid parameters include:

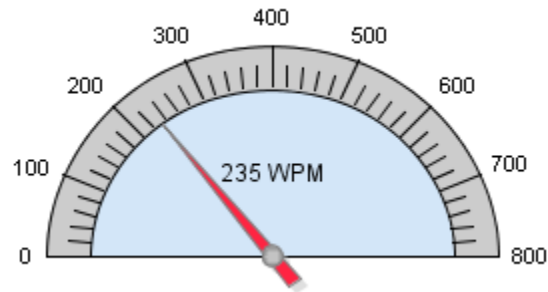
Parameter Name	Description	Data Type	Example
data	The data that is to be charted. If using the GetUserOverview method from the ARS this value will be provided for you.	String	p:2,a:5,sol:3,l:5,soc:2,ve:6,vi:8
width	The width of the chart	Numeric	350
showLegend	Toggles the display of the legend.	Boolean	true

Example:

<http://charts.smartermeasure.com/charting.render/ct/radar/data/p:2,a:5,sol:3,l:5,soc:2,ve:6,vi:8/width/275>

3.3 Gauge Chart

The gauge chart is primarily used to display the reading speed and typing speed.



Base Gauge Chart URL: <http://charts.smartermeasure.com/charting.render/ct/gauge>

Valid parameters include:

Parameter Name	Description	Data Type	Example
score	The value to show on the gauge. If using the GetUserOverview method from the ARS this value will be provided for you.	Numeric	35
width	The width of the chart	Numeric	350
units	The units that are being displayed. By default this is WPM.	String	WPM
scaleMax	The maximum number that should be displayed on the gauge. If the score is above this value the gauge will automatically adjust to the score value. Typically this will not need to be set as it will adjust for both reading and typing automatically.	Numeric	800
fillColor	The inside background color - currently blue in the image above.	Hex Code	D3E6F8

handColor	The color of the hand/arrow	Hex Code	FF2442
rimColor	The color of the rim - currently grey in the image above	Hex Code	CCCCCC

Example:

<http://charts.smartermeasure.com/charting.render/ct/gauge/score/35/width/275>

3.4 Scale Chart

The scale chart is used in several sections of SmarterMeasure to display how the user scored in the section.



Base Scale Chart URL: <http://charts.smartermeasure.com/charting.render/ct/scale>

Valid parameters include:

Parameter Name	Description	Data Type	Example
score	The value to show on the gauge. If using the GetUserOverview method from the ARS this value will be provided for you.	Numeric	35
width	The width of the chart	Numeric	350
showLabels	Specifies if the labels at the top of the chart should be displayed. If the chart size is too small and the labels overlap they will automatically be removed.	Boolean	True

Example:

<http://charts.smartermeasure.com/charting.render/ct/scale/score/87/width/275/showLabels/false>

3.3 Bullseye Chart

The Bullseye chart is used to display the typing accuracy.



Base Bullseye Chart URL: <http://charts.smartermeasure.com/charting.render/ct/bullseye>

Valid parameters include:

Parameter Name	Description	Data Type	Example
score	The value to show on the gauge. If using the GetUserOverview method from the ARS this value will be provided for you.	Numeric	35
width	The width of the chart	Numeric	350

Example:

<http://charts.smartermeasure.com/charting.render/ct/bullseye/score/65/width/225>